
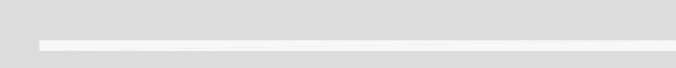
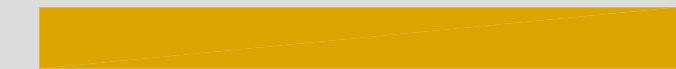





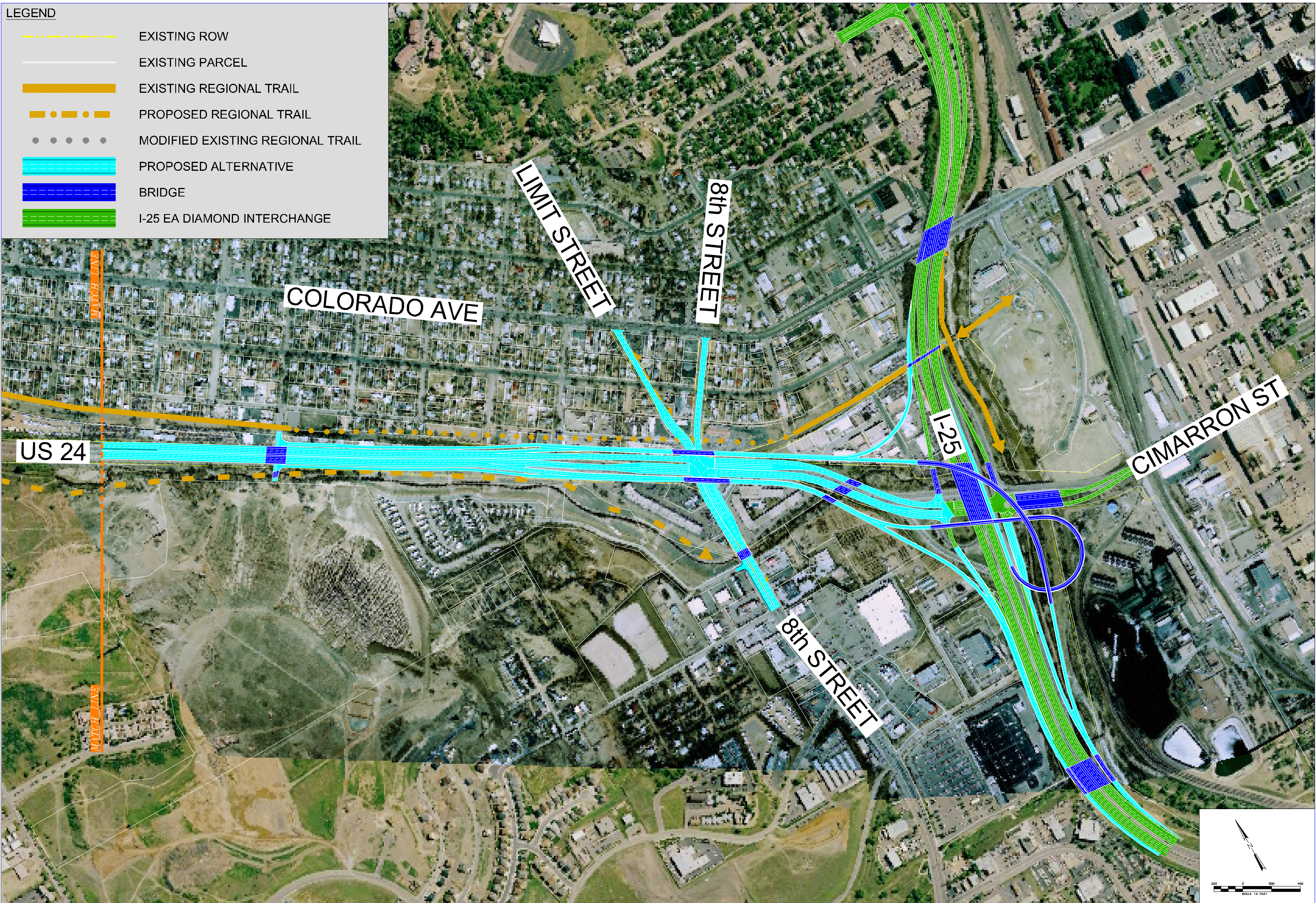


LEGEND

-  EXISTING ROW
-  EXISTING PARCEL
-  EXISTING REGIONAL TRAIL
-  PROPOSED REGIONAL TRAIL
-  MODIFIED EXISTING REGIONAL TRAIL
-  PROPOSED ALTERNATIVE
-  BRIDGE
-  I-25 EA DIAMOND INTERCHANGE



DRAFT
DATE: 01/26/06

I-25 DIRECT / 8th ST SIGNALIZED INTERSECTION / 14th ST ACCESS

EXPRESSWAY
FREEWAY

